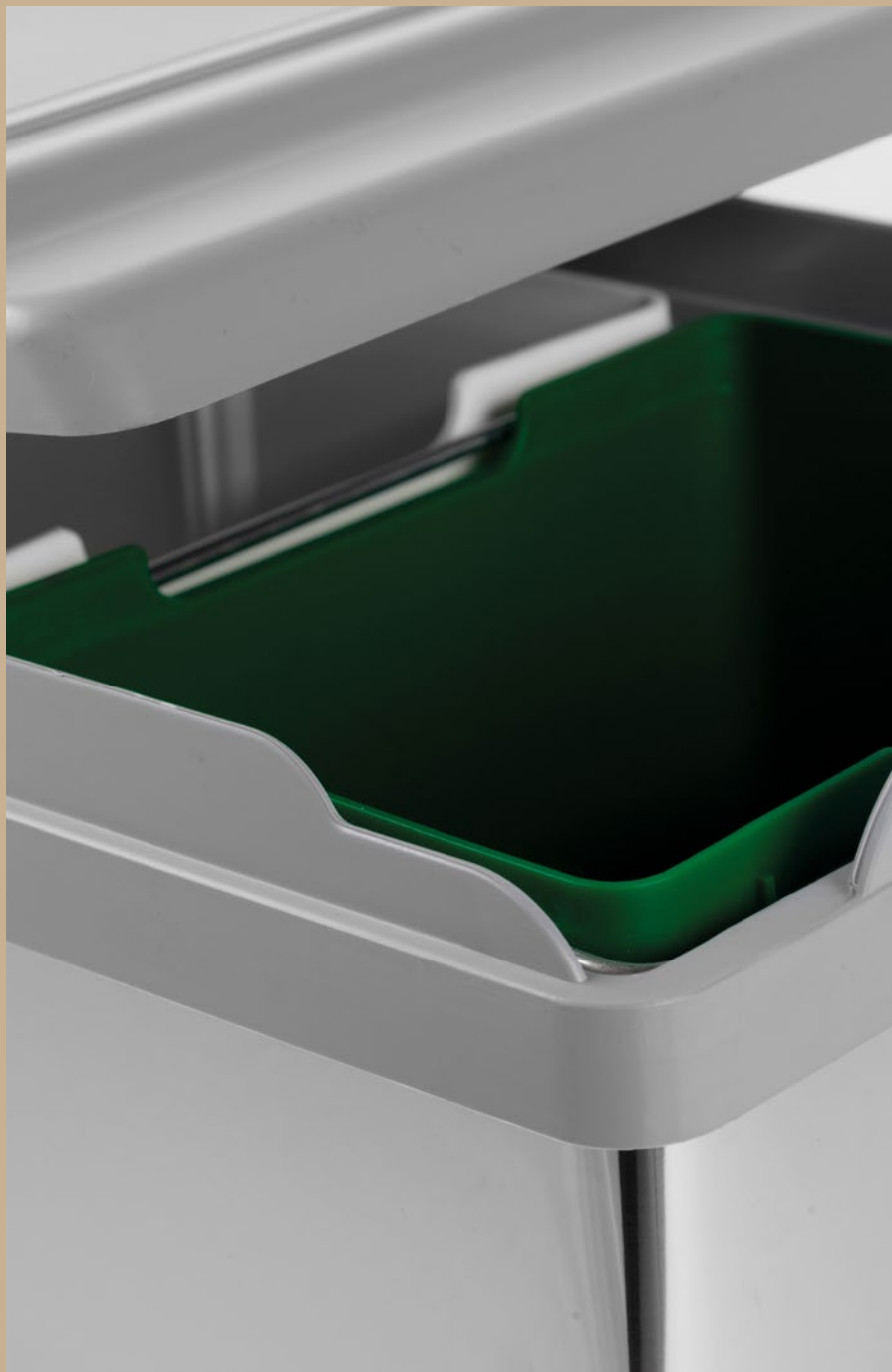


MANUAL-OPENING PULL-OUT TRASH CANS

Tower



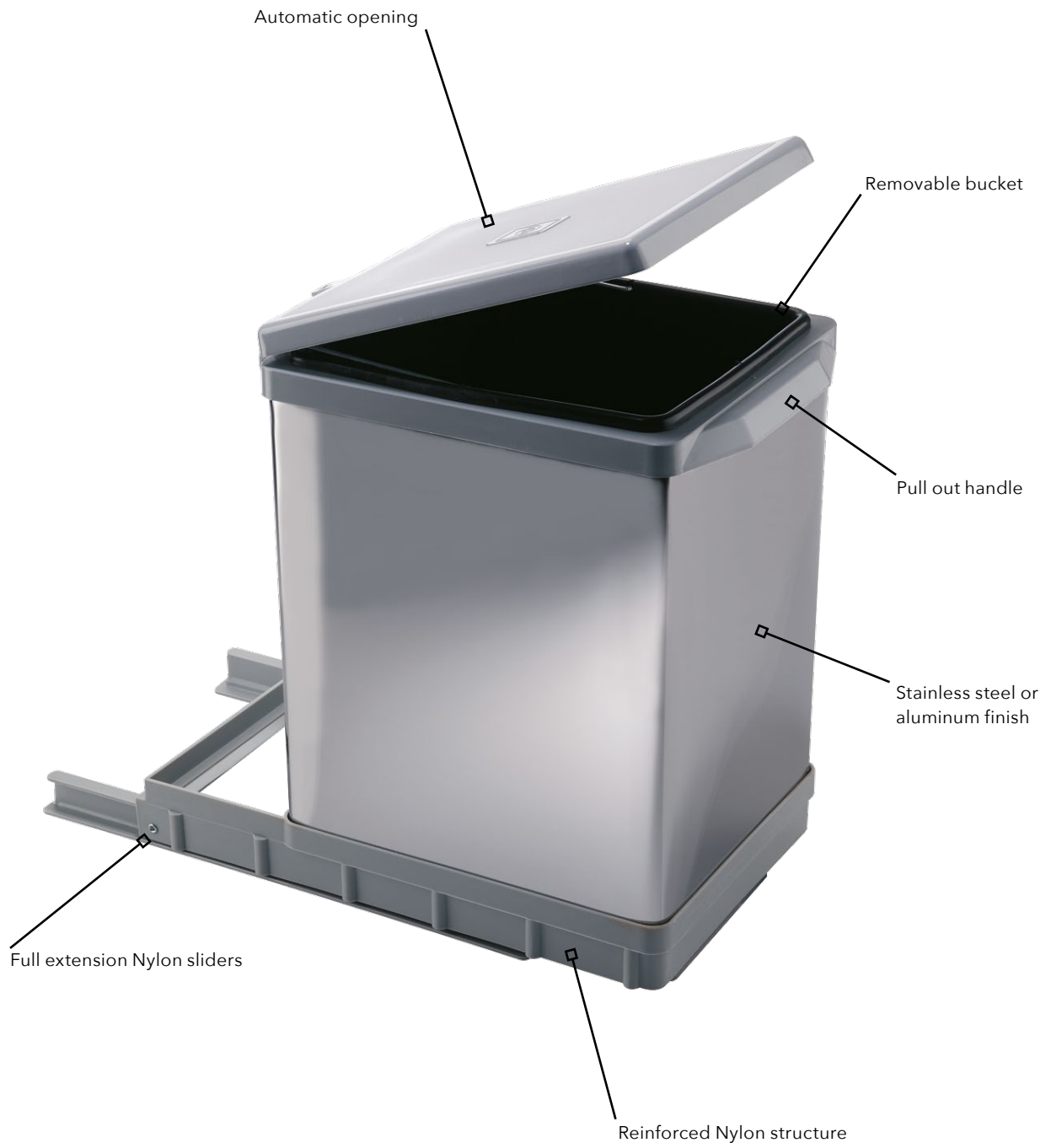


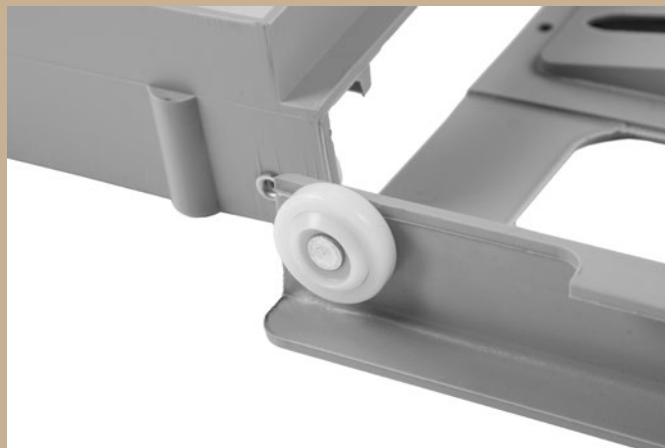
A waste bin product line for the separate collection of waste with an extractable basket. Lid opens automatically when the bin is pulled out. Wide range of finishes: plastic, stainless steel, and aluminum.

FEATURES

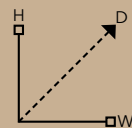
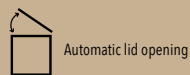
- Product made of fully recyclable materials
- Full extraction Nylon sliders
- Easy to assemble with only 4 screws







Standard features



PAI609/1_AM

H: 15 9/16" (395 mm)
D: 16 2/16" (410 mm)
W: 9 13/16" (250 mm)
Capacity (qt): 18
Capacity (lt): 17
Finish: Stainless steel
 Thermoplastic grey



PAL609/1ALL_AM

H: 15 9/16" (395 mm)
D: 16 2/16" (410 mm)
W: 9 13/16" (250 mm)
Capacity (qt): 18
Capacity (lt): 17
Finish: Aluminum
 Thermoplastic grey



PAI605/1_AM

H: 16 2/16" (410 mm)
D: 18 2/16" (460 mm)
W: 9 13/16" (250 mm)
Capacity (qt): 17+11
Capacity (lt): 16+10
Finish: Stainless steel
 Thermoplastic grey



PAL605/1ALL_AM

H: 16 2/16" (410 mm)
D: 18 2/16" (460 mm)
W: 9 13/16" (250 mm)
Capacity (qt): 17+11
Capacity (lt): 16+10
Finish: Aluminum
 Thermoplastic grey

